

# KAM



## **SENTOSA**

VINYL FLOORING





原料区  
Raw Material Area



生产区  
Production Area



成品区  
Finished Products Area

## 十余年

地面产品已涵盖复合多层地板、同质透心地板及片材地板等多个核心品类。

秉持对船舶建材品质的极致追求，公司始终选用符合海事标准的优质原料，深耕产品创新与技术升级领域，以专业实力铸就船舶制造企业与船东高度信赖的行业品牌。

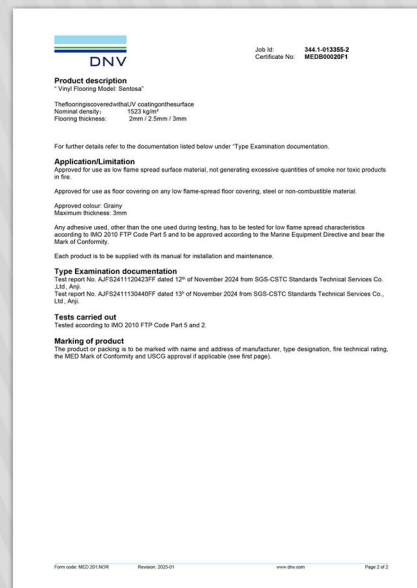
坐落于上海金山的生产基地占地 150 亩，年产能突破 1600 万平方米。

## Over more than a decade

The ground product range already covers multiple core categories, including composite multi-layer flooring, homogeneous full-bodied flooring, and sheet flooring.

Upholding an uncompromising pursuit of excellence in the quality of marine building materials, the company consistently selects premium raw materials that comply with maritime standards and deeply commits itself to the fields of product innovation and technological upgrading. Leveraging its professional strengths, it has built an industry brand that is highly trusted by shipbuilding enterprises and shipowners.

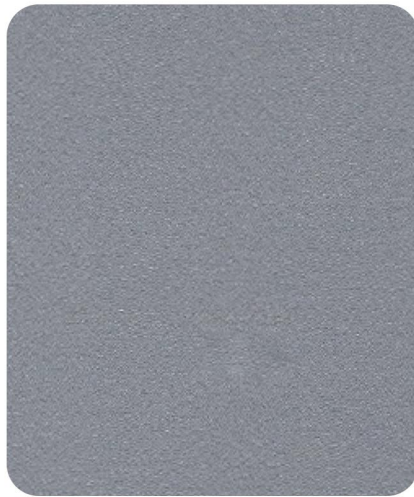
The production base located in Jinshan, Shanghai covers an area of 150 mu, with an annual production capacity exceeding 16 million square meters.



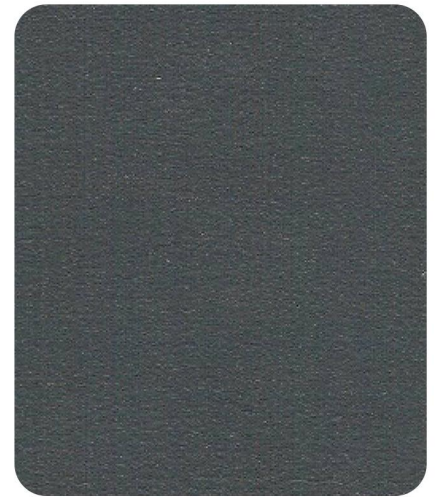
## 资质证书 Certifications



65833 Size:609.6mm×609.6mm×2.0mm



65834 Size:609.6mm×609.6mm×2.0mm



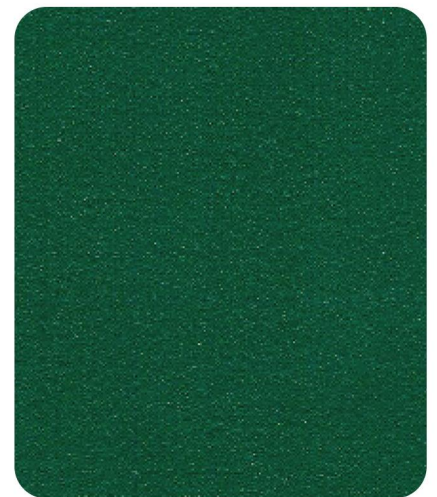
65835 Size:609.6mm×609.6mm×2.0mm



65836 Size:609.6mm×609.6mm×2.0mm



65837 Size:609.6mm×609.6mm×2.0mm



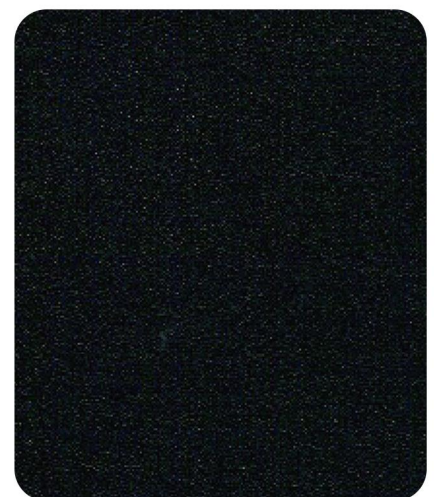
65838 Size:609.6mm×609.6mm×2.0mm



65839 Size:609.6mm×609.6mm×2.0mm



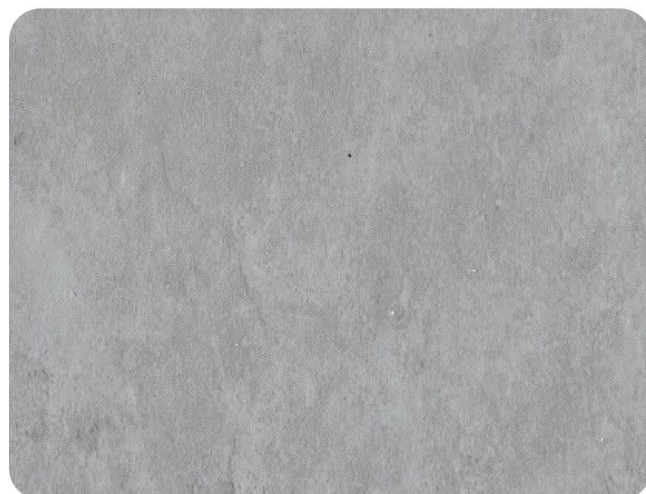
65840 Size:609.6mm×609.6mm×2.0mm



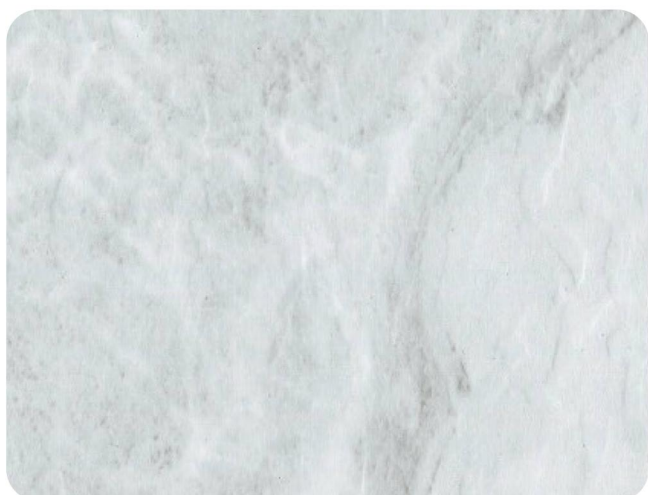
65841 Size:609.6mm×609.6mm×2.0mm



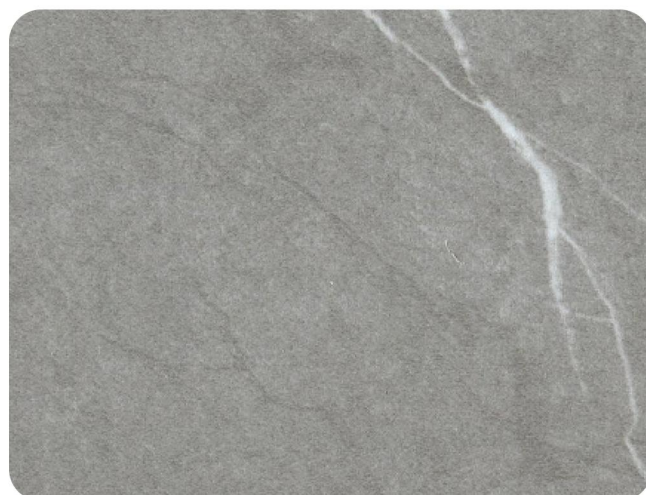
65801 Size:609.6mm×609.6mm×2.0mm



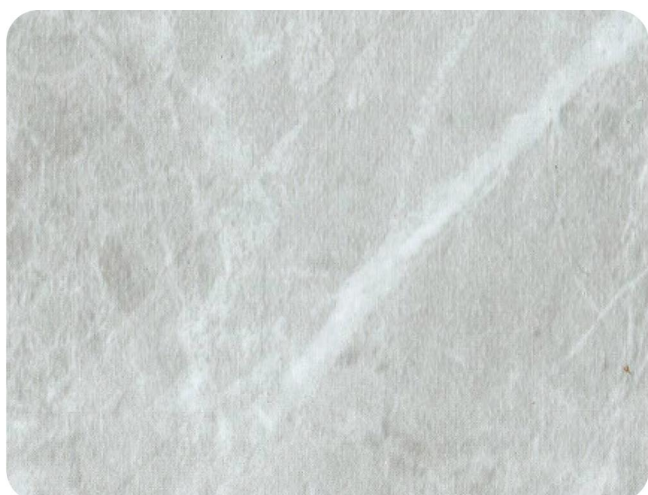
65802 Size:609.6mm×609.6mm×2.0mm



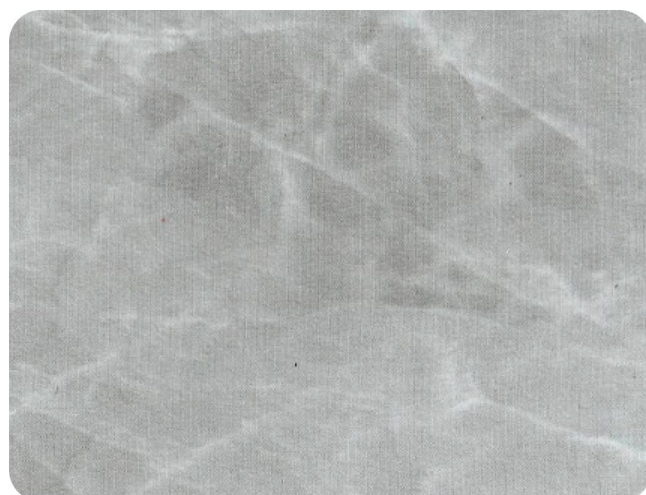
65803 Size:609.6mm×609.6mm×2.0mm



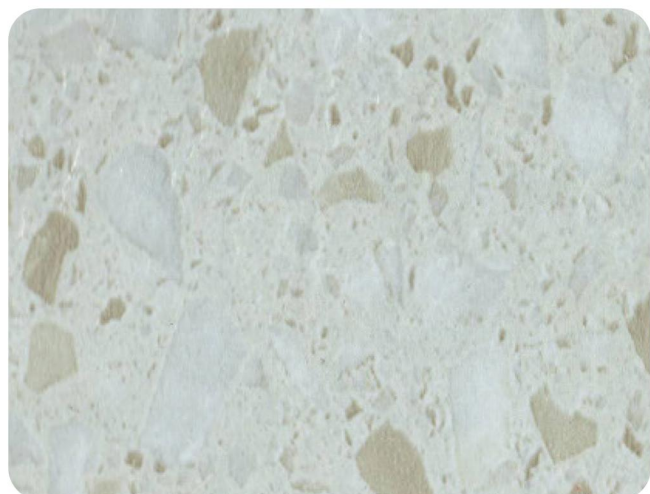
65804 Size:609.6mm×609.6mm×2.0mm



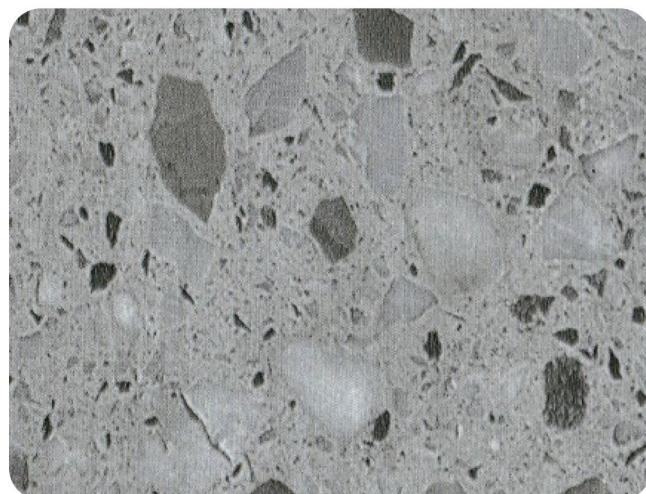
65805 Size:609.6mm×609.6mm×2.0mm



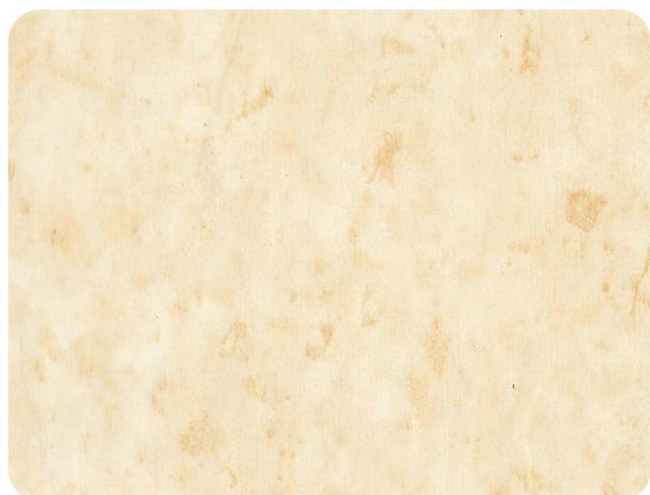
65806 Size:609.6mm×609.6mm×2.0mm



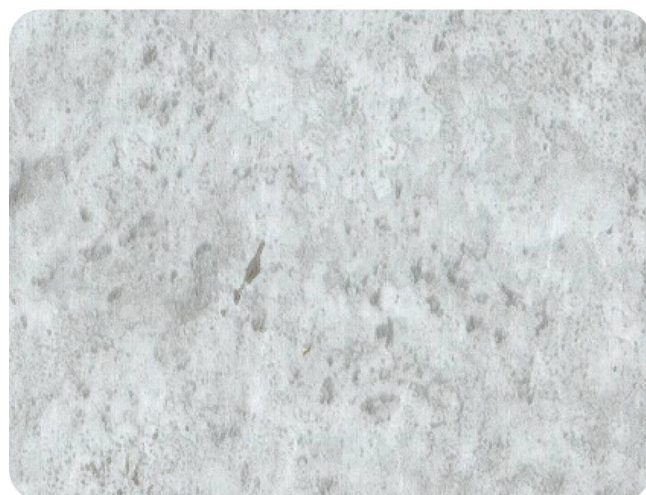
65807 Size:609.6mm×609.6mm×2.0mm



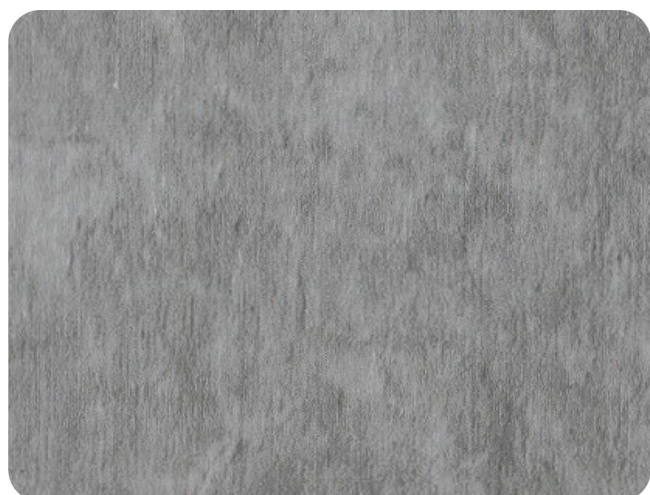
65808 Size:609.6mm×609.6mm×2.0mm



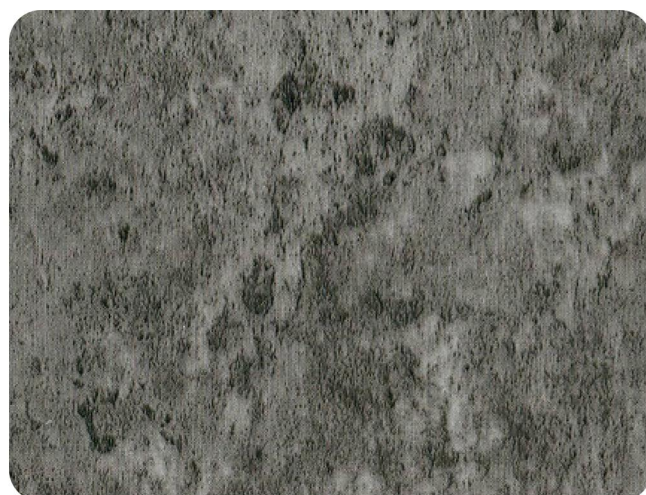
65809 Size:609.6mm×609.6mm×2.0mm



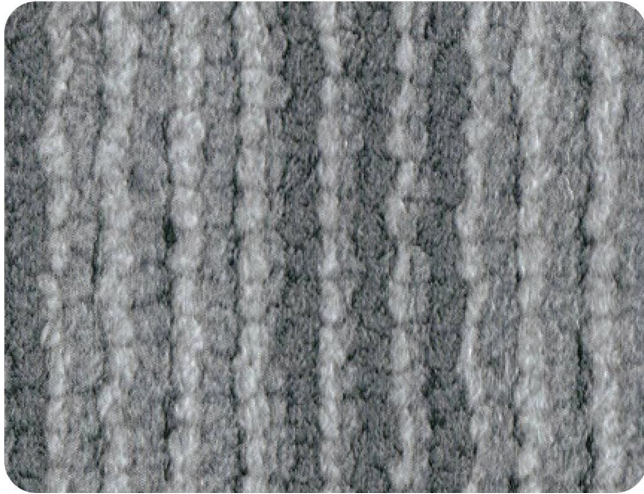
65810 Size:609.6mm×609.6mm×2.0mm



65811 Size:609.6mm×609.6mm×2.0mm



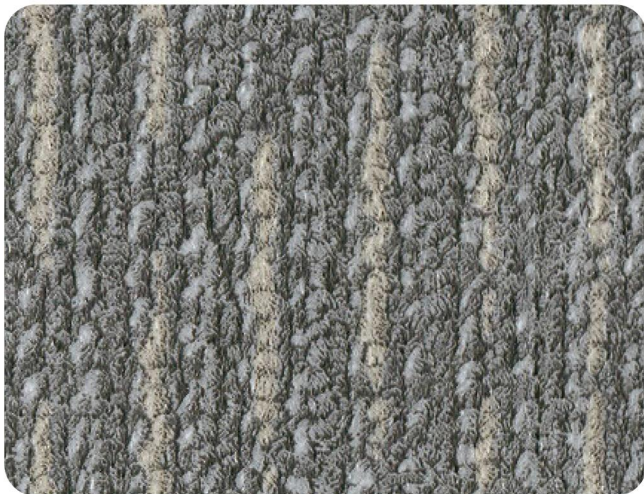
65812 Size:609.6mm×609.6mm×2.0mm



65813 Size:609.6mm×609.6mm×2.0mm



65814 Size:609.6mm×609.6mm×2.0mm



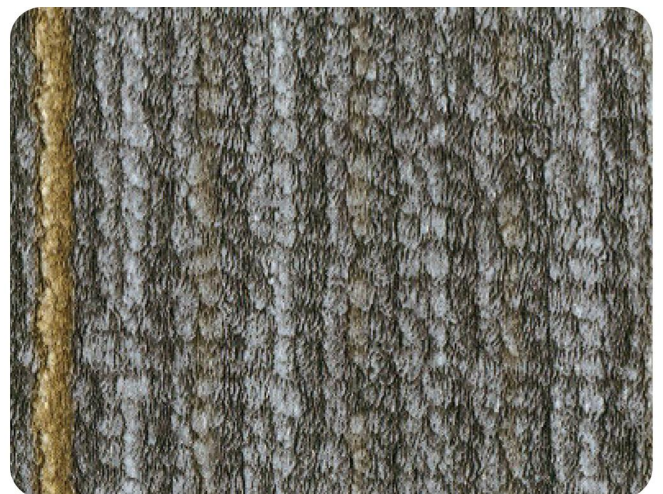
65815 Size:609.6mm×609.6mm×2.0mm



65816 Size:609.6mm×609.6mm×2.0mm



65817 Size:609.6mm×609.6mm×2.0mm



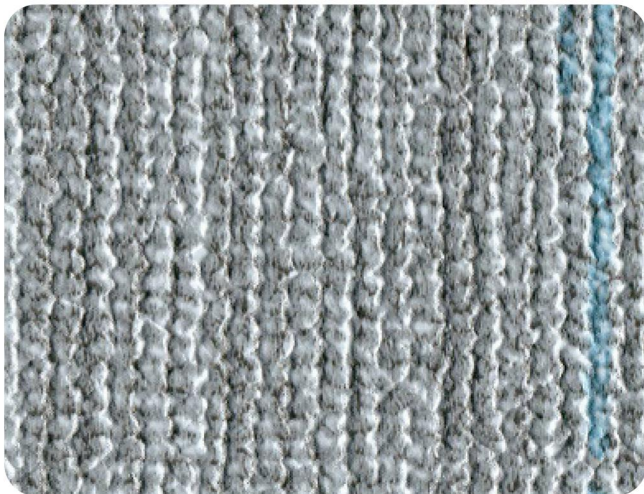
65818 Size:609.6mm×609.6mm×2.0mm



65819 Size:609.6mm×609.6mm×2.0mm



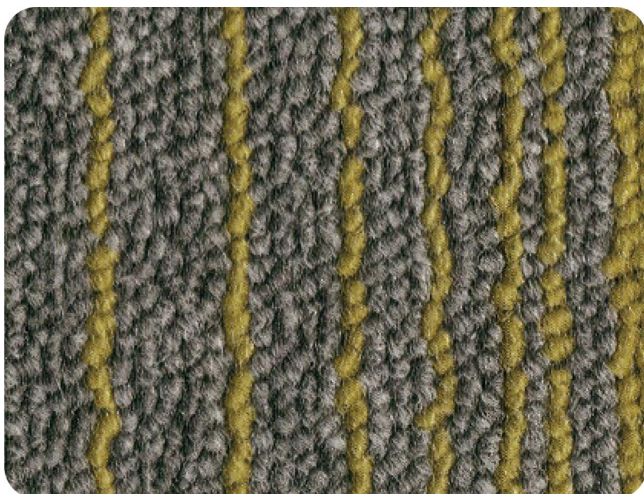
65820 Size:609.6mm×609.6mm×2.0mm



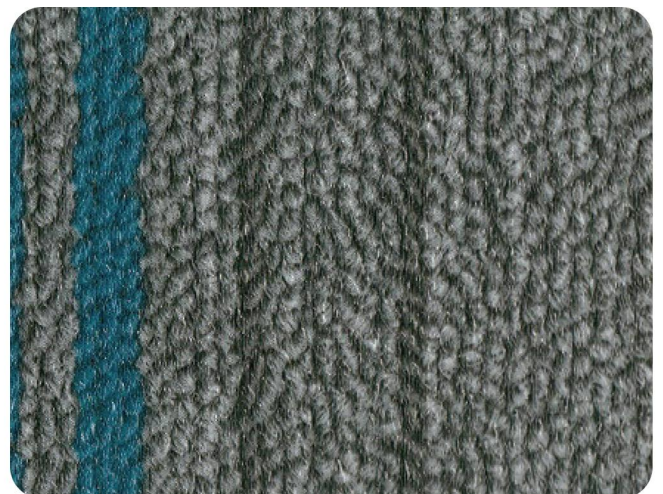
65821 Size:609.6mm×609.6mm×2.0mm



65822 Size:609.6mm×609.6mm×2.0mm



65823 Size:609.6mm×609.6mm×2.0mm



65824 Size:609.6mm×609.6mm×2.0mm



65825 Size:203mm×1221mm×2.0mm



65826 Size:203mm×1221mm×2.0mm



65827 Size:203mm×1221mm×2.0mm



65828 Size:203mm×1221mm×2.0mm



65829 Size:203mm×1221mm×2.0mm



65830 Size:203mm×1221mm×2.0mm



65831 Size:203mm×1221mm×2.0mm



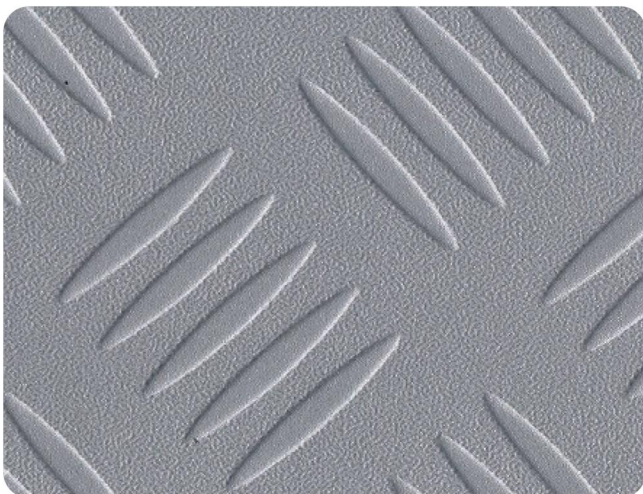
65832 Size:203mm×1221mm×2.0mm



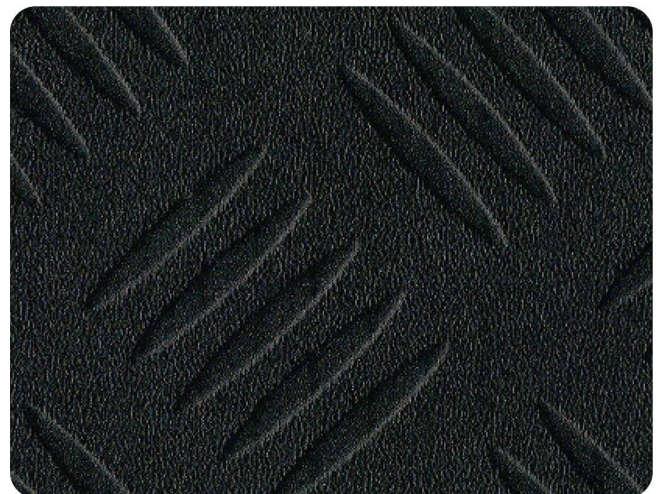
65842 Size:609.6mm×609.6mm×3.0mm



65843 Size:609.6mm×609.6mm×3.0mm



65844 Size:609.6mm×609.6mm×3.0mm



65845 Size:609.6mm×609.6mm×3.0mm

## Technical Data

Characteristics	Standards	Result
Length /Width	EN427 ENISO 24342 ASTM F2055,GB/T 4085-2015	-0.13%≤X≤0.13%
Thickness	EN 428 EN ISO 24346 ASTM F386,GB/T 4085-2015	-0.10mm≤X≤0.13mm
Squareness	EN427 ENISO 24342 ASTM F2055,GB/T 4085-2015	≤0.25mm
Fire Classification	EN 13501 GB 8624	Bf1-s1 B1
Residual Indentation	EN433 ENISO 24342-1 ASTM F1914,GB/T 4085-2015	≤0.10mm ≤8%,≤0.10mm
Dimensional Stability	EN434 EN ISO 23999 ASTM F2055,GB/T 4085-2015	<0.25% ≤0.16%,≤0.25%
High Temperature Warping	EN434 ENISO 23999 ASTM F2199,GB/T 4085-2015	≤2mm
Wear Resistance	EN660-2 GB/T 4085-2015	T
Formaldehyde Emission	ISO16000 GB 18580	ND
Color Fastness To Light	ENISO 105-B02 ASTM F1515,GB/T 4085-2015	≥6, ΔE≤8,≥6
Resistance To Chemicals	EN423 ASTM 925 GB/T 4085-2015	Class0 No More Than "Slight Change"
Ply Adhesion	EN ISO 24345 GB/T 11982.1	Pass ≥50N/50mm
Heavy Metal	EN 71-3,ASTM F963 GB 18586	Pass
TVOC Emission	AgBB CA01350	TVOC28<1.0mg/m <sup>2</sup> Pass
Castor Chair Resistance	EN 425 ISO 4918 GB/T 4085-2015	No Visible Damage
Antislip	DIN 51130	≥R10
Smoke And Toxicity Test	2010 FTP part2	OK
Test For Surface Flammability	2010 FTP part5	OK



Lack of Asbestos in this product.  
Samples for color selection only, please adhere to the actual product instead.

# CUSTOM-MADE IS AVAILABLE

FLOORING SYSTEM FOR TRANSPORT  
SINGAPORE DESIGNED VINYL SHEET

