

KAM



KEPPEL SPC LOCK FLOORING





原料区
Raw Material Area



生产区
Production Area



成品区
Finished Products Area

十余年

地面产品已涵盖复合多层地板、同质透心地板及片材地板等多个核心品类。

秉持对船舶建材品质的极致追求，公司始终选用符合海事标准的优质原料，深耕产品创新与技术升级领域，以专业实力铸就船舶制造企业与船东高度信赖的行业品牌。

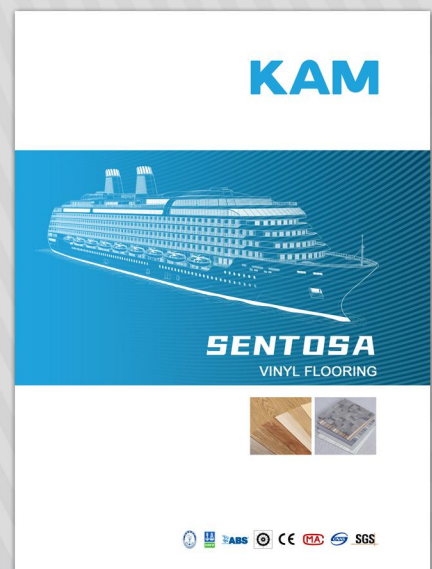
坐落于上海金山的生产基地占地 150 亩，年产能突破 1600 万平方米。

Over more than a decade

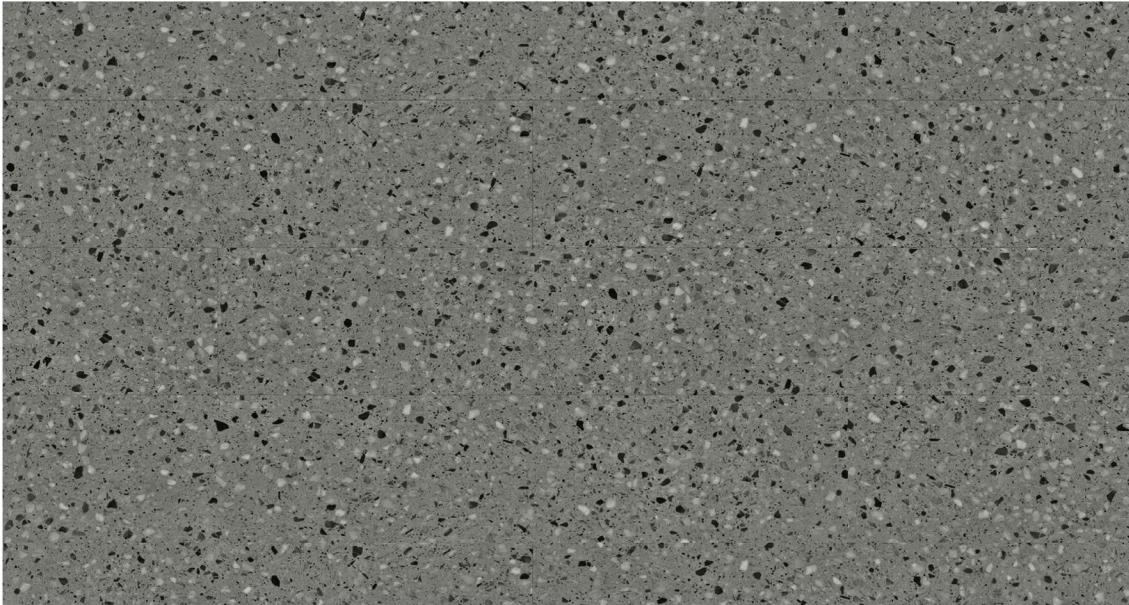
The ground product range already covers multiple core categories, including composite multi-layer flooring, homogeneous full-bodied flooring, and sheet flooring.

Upholding an uncompromising pursuit of excellence in the quality of marine building materials, the company consistently selects premium raw materials that comply with maritime standards and deeply commits itself to the fields of product innovation and technological upgrading. Leveraging its professional strengths, it has built an industry brand that is highly trusted by shipbuilding enterprises and shipowners.

The production base located in Jinshan, Shanghai covers an area of 150 mu, with an annual production capacity exceeding 16 million square meters.



PVC 地板
PVC Flooring



SPC-S1004

Size:184x1222mm

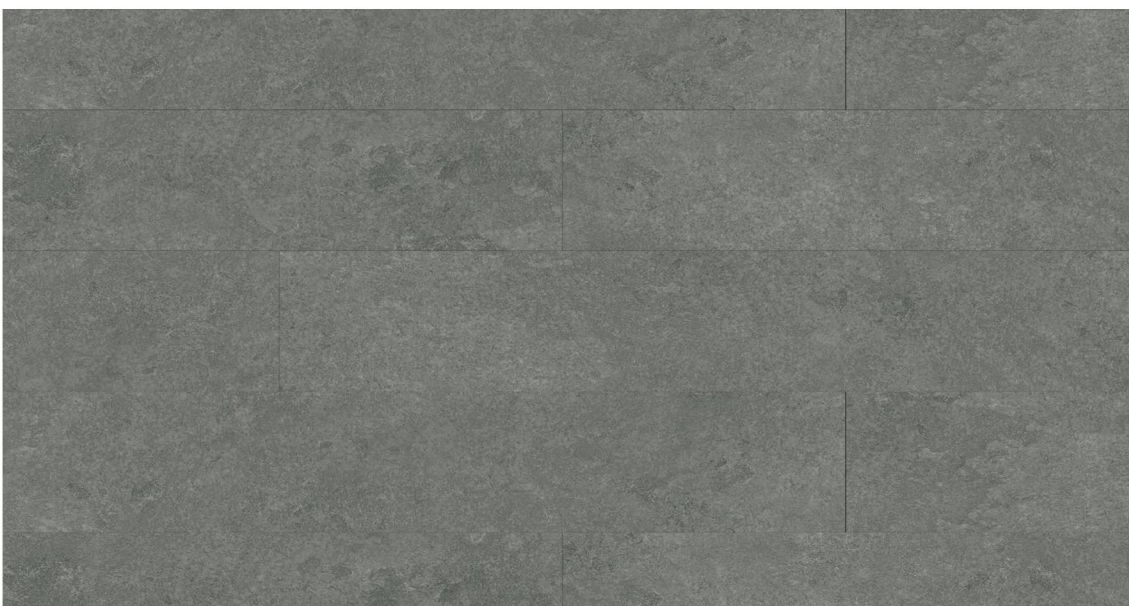
Thickness:4.0mm



SPC-S1003

Size:184x1222mm

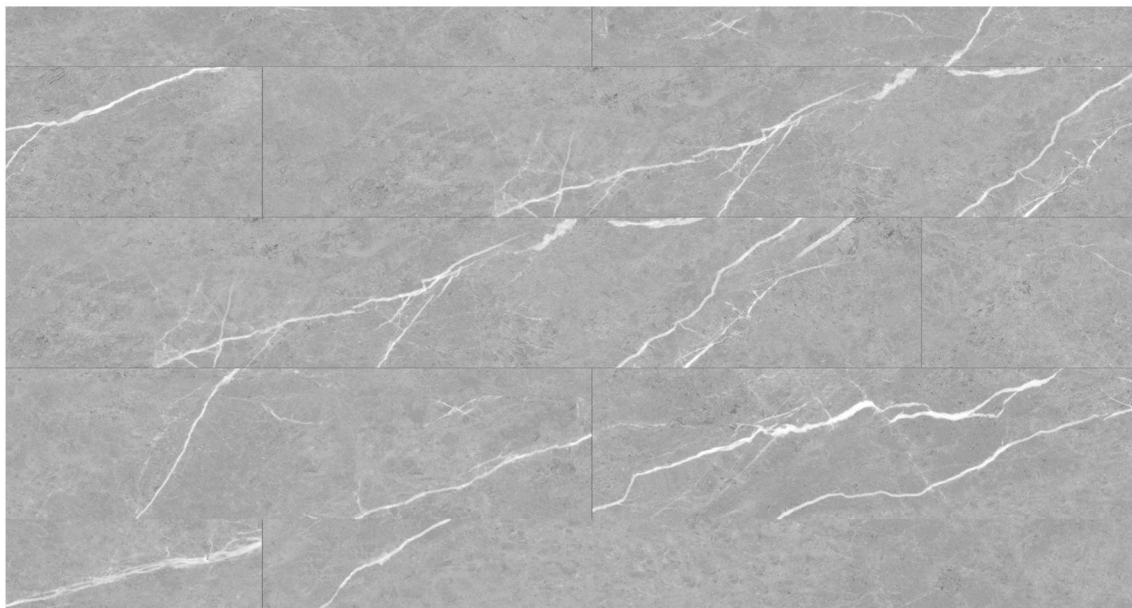
Thickness:4.0mm



SPC-S1002

Size:184x1222mm

Thickness:4.0mm



SPC-S1001

Size:184x1222mm

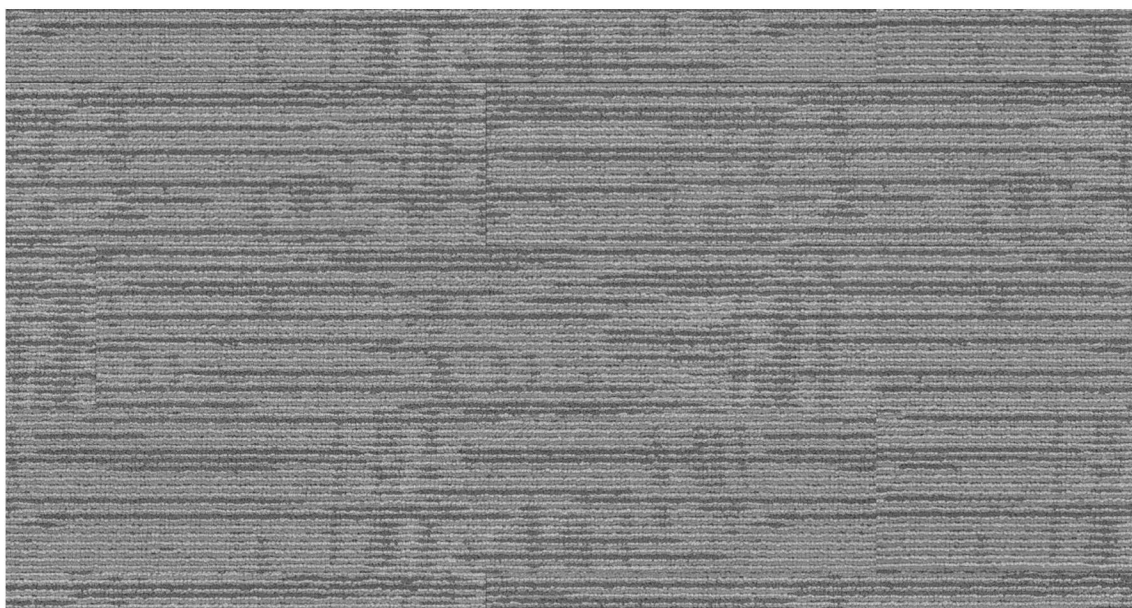
Thickness:4.0mm



SPC-C2005

Size:184x1222mm

Thickness:4.0mm



SPC-C2004

Size:184x1222mm

Thickness:4.0mm



SPC-C2003

Size:184x1222mm

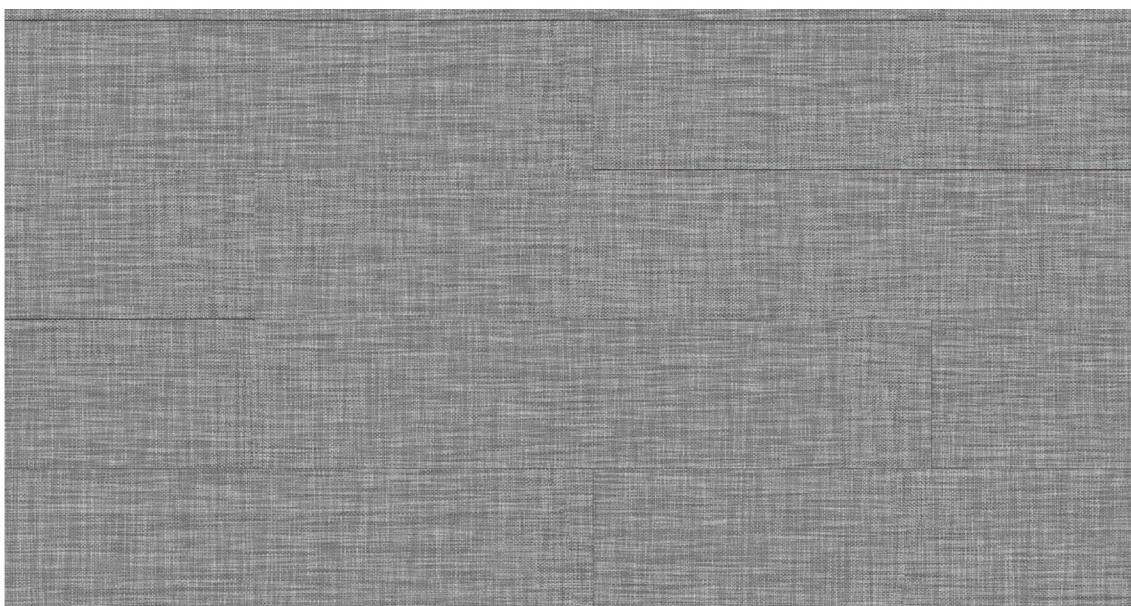
Thickness:4.0mm



SPC-C2002

Size:184x1222mm

Thickness:4.0mm



SPC-C2001

Size:184x1222mm

Thickness:4.0mm



SPC-PM618

Size:184x1222mm

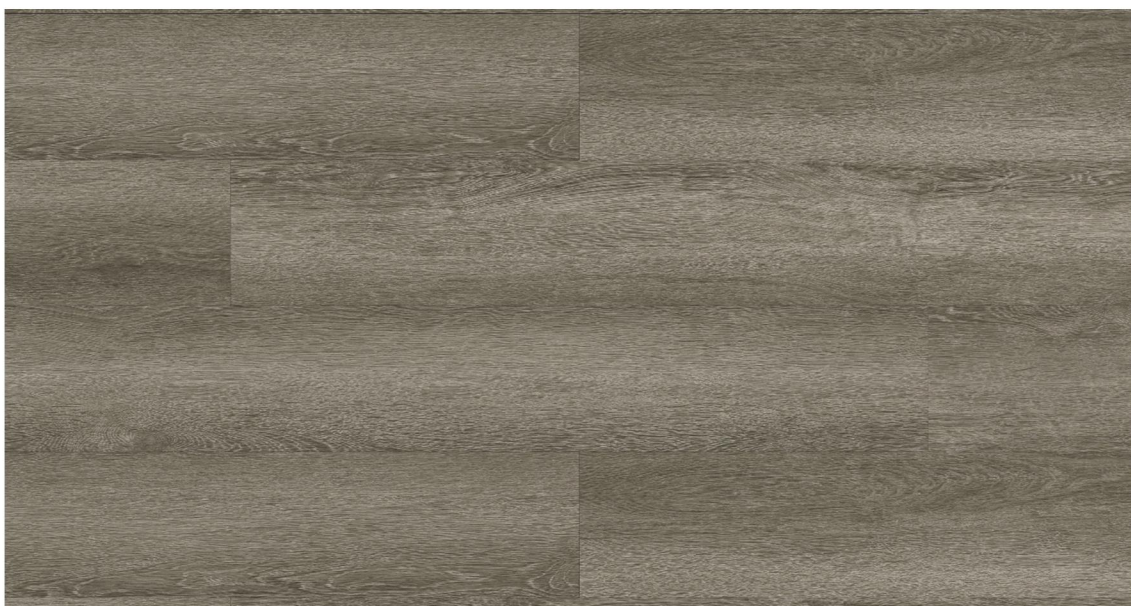
Thickness:4.0mm



SPC-PM617

Size:184x1222mm

Thickness:4.0mm



SPC-PM615

Size:184x1222mm

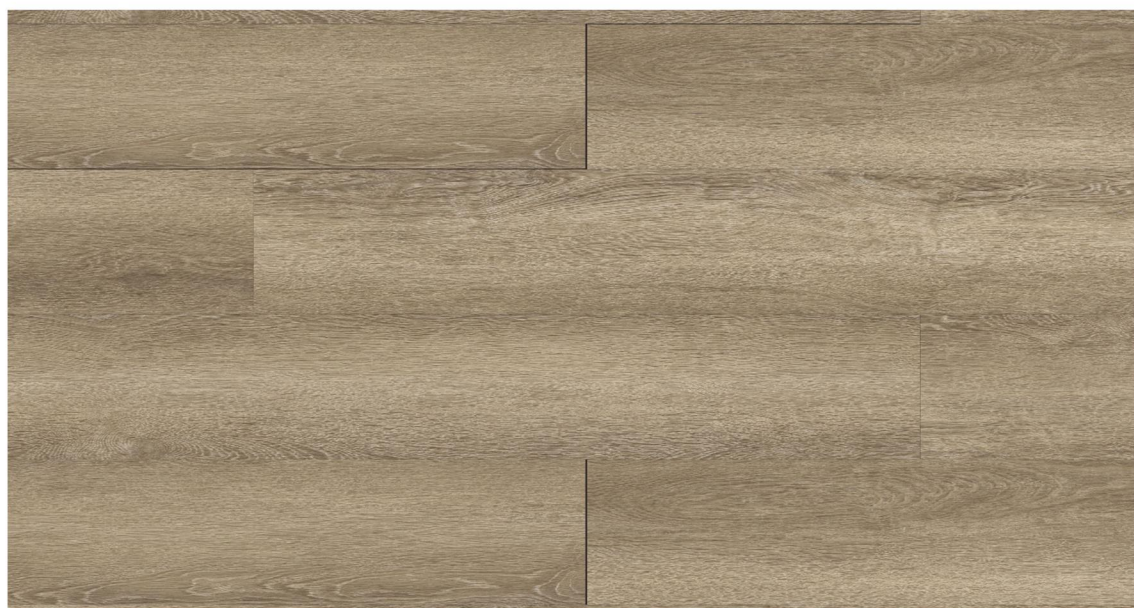
Thickness:4.0mm



SPC-PM613

Size:184x1222mm

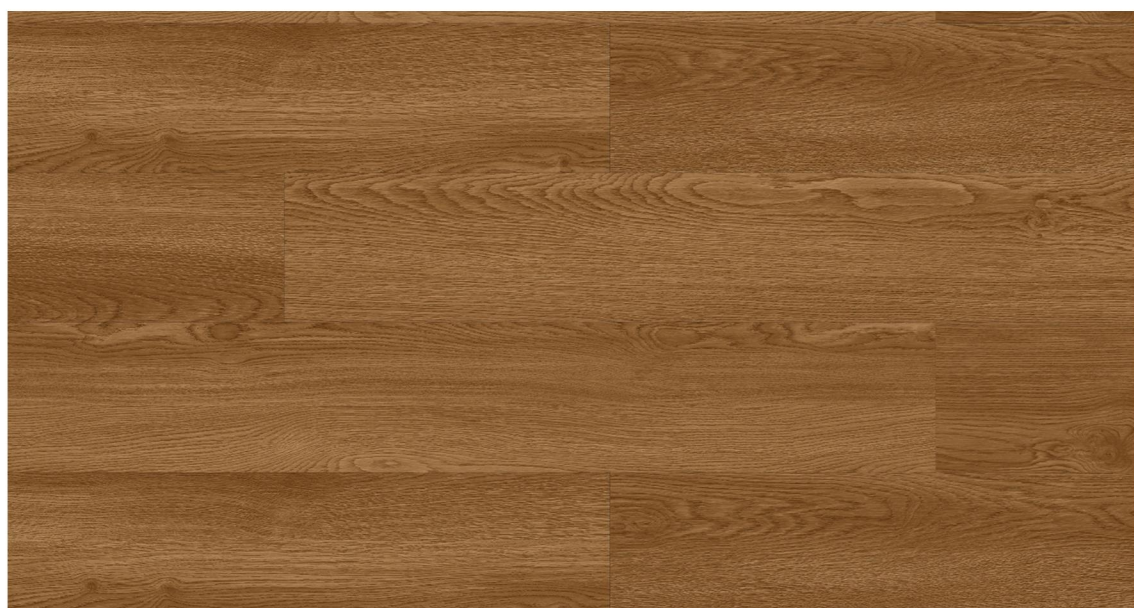
Thickness:4.0mm



SPC-PM612

Size:184x1222mm

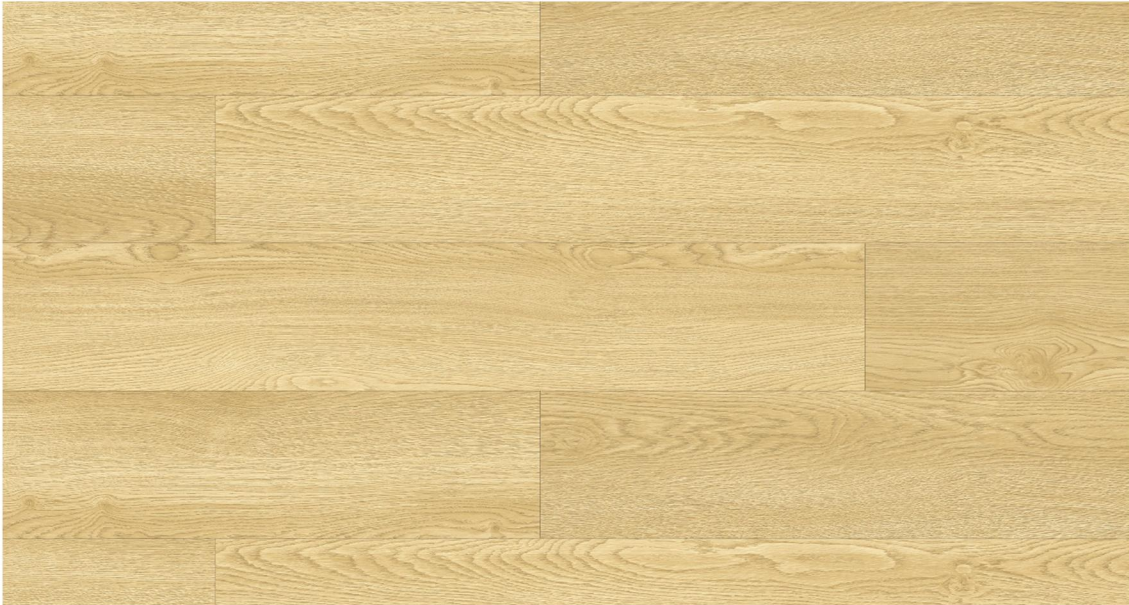
Thickness:4.0mm



SPC-PM611

Size:184x1222mm

Thickness:4.0mm



SPC-PM610

Size:184x1222mm

Thickness:4.0mm



SPC-PM602

Size:184x1222mm

Thickness:4.0mm



SPC-PM601

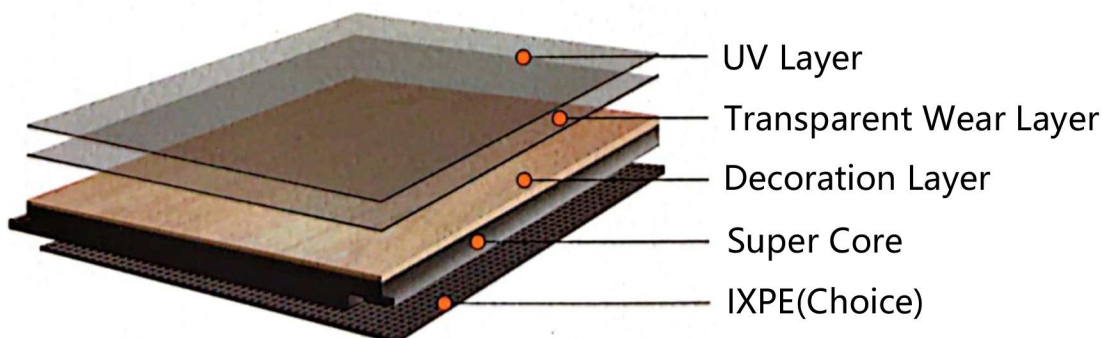
Size:184x1222mm

Thickness:4.0mm

TECHNICAL PARAMETER

CHARACTERISTICS	TEST METHOD	RESULT
Peeling strength of layers	EN 431	Pass
Shear forces of layers	EN 432	Good
Residual indentation after static load	EN 433	Mean values ≤ 0.01 mm
Dimension Stability	EN 434	Shrinkage $\leq 0.12\%$ Curling $\leq 1.2\%$
Flexibility-10mm mandrel	EN 435	No Damage
Resistance to chemicals	EN 423	Class 0
Bearing a castor chair	EN 425	No disturbance No delamination
Color fastness to light	ISO 105 B02	≥ 6
Wear resistance	EN660	Pass
Toxic	EN71-3	Complies
Resistance to fire	ASTM E84-03	NFPA Class B
Slip resistance	DIN 51130	R9
Performance classification	EN685	23, 34, 43
Smoke and toxicity test	2010 FTP part2	OK
Test for surface flammability	2010 FTP part5	OK

Product structure diagram



Lack of Asbestos in this product.
Samples for color selection only, please adhere to the actual product instead.

CUSTOM-MADE IS AVAILABLE

FLOORING SYSTEM FOR TRANSPORT
SINGAPORE DESIGNED VINYL SHEET

